

Half Cross Stitch Butterfly Pin Party Project Sheet – Beginner

MATERIALS

8" x 8" piece DMC white 14 count Aida fabric
1 skein each DMC Pearl Cotton #5 in colors 898, 961
1 skein each DMC Embroidery Floss colors: 604, 898
DMC Memory Thread colors: 6010, 6120
1 pkg. DMC #18-22 Tapestry needles
DMC Embroidery Scissors
4" Embroidery Hoop
1" pin back
Quick drying clear crafters glue



Directions to Project:

1. Place fabric in hoop and tighten so fabric is taught and even.
2. Open skein of Pearl Cotton #5 by sliding off labels and letting it untwist.
 - *Look for the tie knot and open the loop.
 - *Cut through all the threads at the bottom of the loop.
 - *Pull out one strand of Pearl Cotton.
 - *Replace color # label back onto cut threads for future reference & set aside.



The Half Cross stitch

1. The half cross stitch is a diagonal stitch and is most commonly worked in horizontal rows for large areas of stitching as in the butterfly wings.

*To make a half cross stitch, the needle comes up in the lower left hole and down in the upper right hole of one square on the fabric. Complete row.

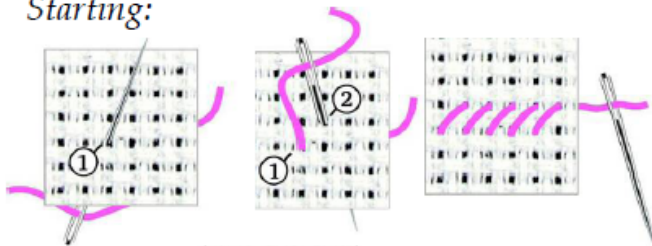
*The return row is stitched in reverse; stitching from right to left, the needle comes up in the upper right and down in the lower left. Complete return row and repeat stitching sequence until area is completely stitched as charted.

* Following the chart stitch design fully in the colors indicated.

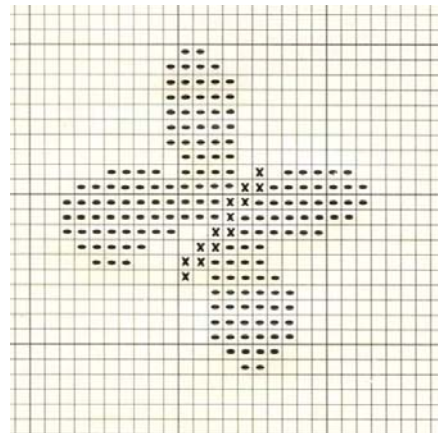
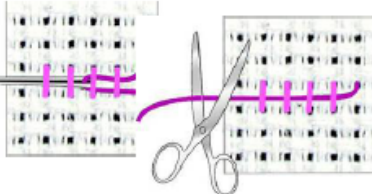
*Clip loose ends on backside.

Note: neat, vertical rows of stitches should appear on the backside of fabric.

Starting:

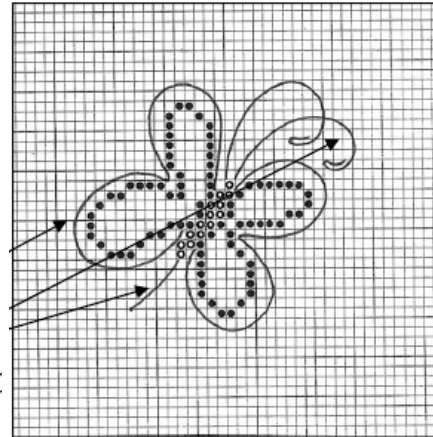


Ending:



Starting and ending a thread

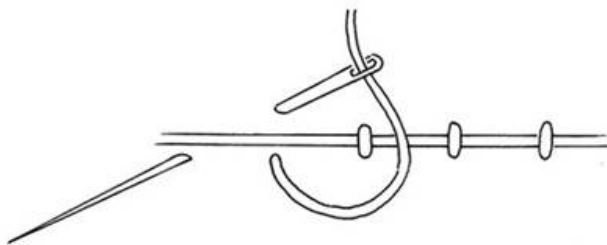
1. When making the first stitch, pull the thread through from the backside leaving a ½" tail. Hold tail onto back of fabric and work several stitches over tail to secure thread.
2. To end a thread, run the threaded needle under a few stitches on the backside of fabric to secure. Clip end of excess thread.



Applying the Memory Thread

Note: Butterfly design must be fully stitched before applying Memory Thread

1. Cut (2) 5" lengths of 6120 Fuchsia Memory Thread. Set aside. Cut (2) 3" lengths & (1) 1" length of 6010 Brown Memory Thread. Set aside.
2. Following the diagrams on the chart, insert the #18 tapestry needle into the fabric where the Memory Thread enters and returns to the backside of the fabric. Wiggle needle to enlarge holes.
3. Starting with the wings, insert one end of the 5" piece of pink Memory Thread into the hole leaving a ¼" piece on the backside. Thread #26 tapestry needle with 1ply pink 604 floss and secure Memory Thread onto back of fabric.
4. Following the diagram, slowly bend Memory Thread into the curved wing shape as illustrated and couch with the same threaded floss using evenly placed stitches to hold Memory Thread in place.
5. When ¾'s of the wing is couched, insert end of Memory Thread into return hole. Finish couching and then secure end onto backside of fabric. Clip end.
6. To make antennae & tail, form the 3" lengths and the 1" length of Brown Memory Thread in your hands before attaching them to the fabric. Set aside.
7. Following the diagram, enlarge holes in the fabric where each antennae and the tail enters into the butterfly body. Insert ends into holes and secure on back side with 1 ply 898 floss. *Note: DO NOT couch antennae or tail onto fabric.*



couching diagram



Making the Pin

1. Carefully cut out the completed butterfly leaving a 1/8" edge of fabric around the perimeter. Avoid cutting the antennae and tail.
2. To prevent the fabric from fraying, apply a small amount of glue to the outside edge by using the #18 needle as an application tool. Let dry.
3. Glue pin back onto center of butterfly body. Let dry. Adjust antennae and tail. Pin onto your favorite shirt, jacket or hat.